

XyLoc Solo

Quick Start

The following instructions are provided for your XyLoc Solo unit. They are designed to provide you a brief introduction to the product. Please refer to the *XyLoc User's Guide for XyLoc Client* for more detailed instructions.

The document is divided into three sections:

1. Placement of the XyLoc Lock
2. Installing the XyLoc Client software
3. Software Removal of XyLoc software
4. Features of the XyLoc Key

Placement of the XyLoc Lock

NOTE: The following instructions refer to the use of our USB XyLoc Lock. In the case of the XyLoc Mobile Lock (PCMCIA), the actual placement will be limited to the available PC Card slot(s) of the machine. However, the best practices (especially the path between Key and Lock) of placement will still apply.

XyLoc uses advanced wireless technology to make PC security more convenient for the user. The proper placement of the XyLoc Lock will ensure that users get the best performance from XyLoc.

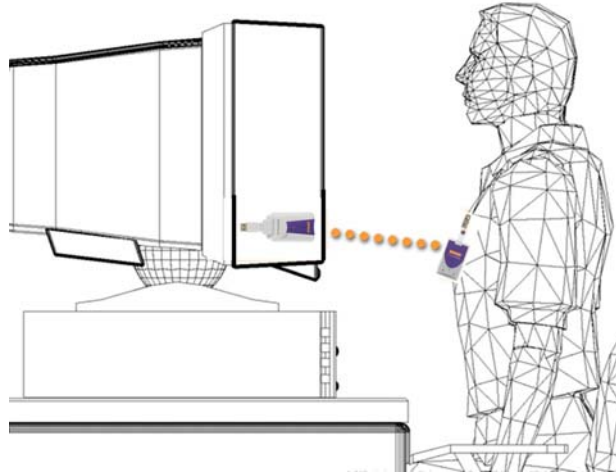
With our USB XyLoc Lock, ideal placement is with the face of the Key parallel to the LED on the front of the Lock. The best performance of the system will be achieved by trying to maintain this positioning while you are seated at your PC or laptop doing your work.

The primary factor in deciding where to place the XyLoc Lock is to determine where the user will wear the XyLoc Key the majority of the time. The Key can be clipped to a shirt pocket or belt or worn on a lanyard around the user's neck.

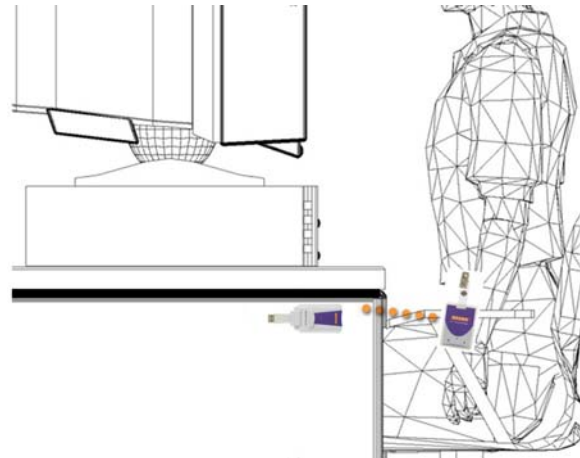
Once you've identified where the Key will be worn, place the Lock at the same height as where the Key will be when the user is at the PC. You should also make sure that the path between the Lock and Key is unobstructed (such as obstruction caused by your arm that might occur while using your mouse or keyboard).

For example, if the user will wear the Key on the left side of the shirt, use the Velcro strip to secure the Lock to the left side of the user's monitor at the same height as the Key will be when the user is seated.

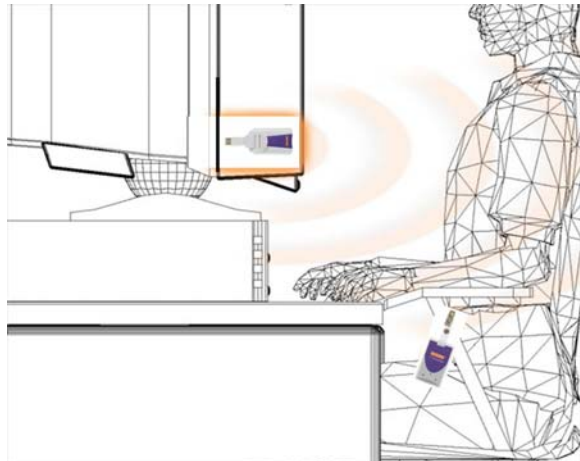
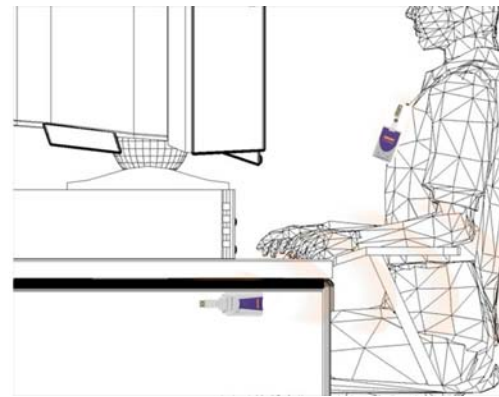
Ideal Lock Placement



Acceptable Lock Placement



Less Desirable Lock Placement



Installing the XyLoc Client

Pre-Installation Notes

- **Windows 2000/XP users must have *local* Administrator privileges to complete the installation.**
- **The Windows XPe version of the XyLoc client only supports English. The other language versions have been removed to keep the install package as small enough to be able to be installed on a Windows XPe Thin Client device. If you need any assistance with installing the Windows XPe version, please contact Ensure Technologies Technical Support [see last page of this document for contact information].**

Installation Steps

- 1. Turn on** the PC and log into Windows 2000 or XP.
- 2. Exit** any applications that are currently running.
- 3.** Place the XyLoc CD-ROM into the CD-ROM drive.
- 4.** If the installer does not automatically launch, use either My Computer or Windows Explorer to select the CD-ROM drive, and run **installXyLoc-v9xx.exe** to run the Installation Wizard and then follow the Wizard's instructions.
- 5. Choose Language:** then click OK.
- 6. Click Next** to continue the installation of the XyLoc Security Service windows
- 7. Click Accept the License Agreement.** Click Next and Install to continue.
- 8. Login Account Selection:** Select the desired user name from the list (This list is gathered from the Users database on your PC. If no such database exists, you must first add a user in the Users control panel).
- 9.** Turn your **XyLoc Key** on by depressing the “**O**” button on the front panel. A green LED will flash confirming that the **Key** is on and the battery is good.

10. Port Selection: XyLoc will attempt to find the port to which the Lock is attached.

If using **USB Lock**, Choose **USB** and click next.

If using **XyLoc Mobile Lock**, choose **PCMCIA** and click next.

11. Device Installation:

USB Lock (USB): Plug in the USB XyLoc Lock and Windows will begin loading the device. The device must be completely installed before proceeding to the next step. To verify the device is installed, check the LED on the Lock. If the LED is lit, then the device is working. If it is not, it not been installed. Please refer the *User's Guide for XyLoc Client* for more details.

XyLoc Mobile Lock (PCMCIA): As with the USB installation, the drivers will install for the PC Card. Check the LED on the Lock to confirm that it is lit before continuing.

12. Confirm XyLoc Key ID: XyLoc will attempt to identify the closest Key and insert that Key ID into this field. Refer to the label on the back of your XyLoc Key and verify that it matches the Key ID shown on the screen. If no Key ID is shown on the screen, or if it is not the correct Key ID, please enter it manually.

13. Personal Name Identification: Enter the user's full name to further identify the Key owner.

14. XSS IP Configuration. This screen has a field to enter the address of the XSS (XyLoc Security Server), if there is one. If there is no XSS, this field can be left blank.

15. XyLoc Configuration Summary. This screen provides a summary of the features you just selected. Choose **Finish** to complete the **Installation Wizard**.

16. Remove the XyLoc CD from the CD drive.

17. Restart your computer when prompted.

18. If your installation was successful, upon restart you will see the **XyLoc logon window**.

19. Click the user's name to log on, or click the Logon Button

20. You will be prompted to enter your standard logon password by your Windows or Novell logon client.

NOTE: If you have set u your XyLoc system for **Hands-Free Unlock or Select User Name**, this will be the last time you will need to enter your password.

Continue to test your XyLoc system by turning away from the PC and walking away. Have a partner watch the screen secure itself. Come back to the PC to see it unlock. Repeat this action a couple of times.

21. The range at which the XyLoc locks and unlocks your PC may be adjusted to suit your level of convenience and security. Should you need further assistance, please contact your organization's administrator, or Ensure Technologies Technical Support [see last page of this document for contact information].

Removal of XyLoc Client Software

In the event that you have to remove the XyLoc client software, please use the following instructions:

1. Before you can remove the software, you must stop the XyLoc service. This can be done through the Services applet in the Control Panel in Windows, or through the XyLoc Configuration Manager under Tools -> Stop XyLoc (NOTE: You must be a system administrator to stop a Windows service, and if done through the configuration manager, you must also be a XyLoc Administrator).
2. Once the services are stopped, you can close the XyLoc Configuration Manager (if open) and then go to the Windows Control Panel and then to "Add/Remove Programs". From here select the "XyLoc Security Service" and remove it.
3. After removal, you will need to reboot.
4. Once the system is rebooted, you can delete the Ensure Technologies directory under Program Files.
5. The USB or PCMCIA drivers do NOT get removed during this process. This way, if you wanted to reinstall, you don't have to go through the device installation again. However, if you want to remove the device, follow the standard process for uninstalling a device in Windows.

XyLoc Key Status Light

The XyLoc Key (Figure 4) is a low power radio transceiver with a unique non-volatile and non-cloneable user identification code. The **Status LED** flashes green when the system is turned **ON** and red when it is turned **OFF**.

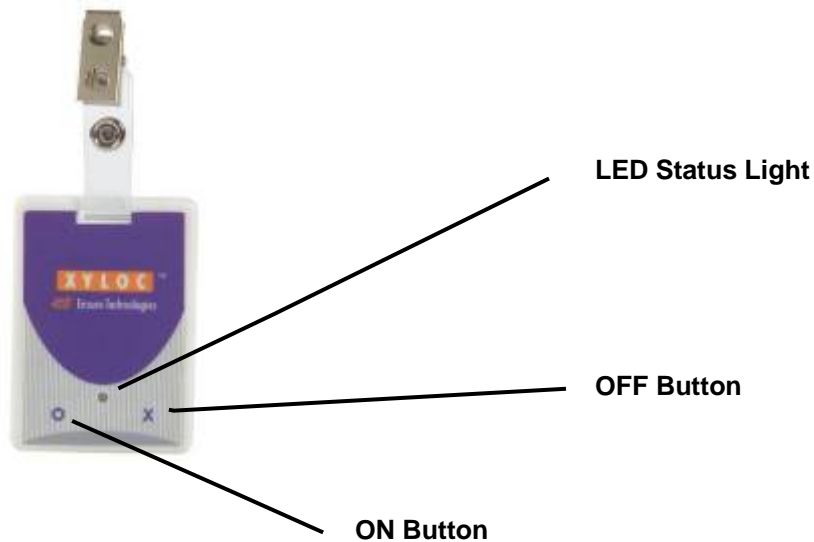


Figure 4

Using the XyLoc Key

The **KeyCard** is powered by single coin cell that lasts approximately twelve months. The **KeyCard** has two buttons on its front panel marked “O” and “X”. The “O” button turns the **Key ON**, and “X” button manually turns the **Key OFF**. The **OFF** action requires an extended depression of the “X” button to turn the **Key OFF**.

The **KeyCard** uses sophisticated power management technology and will automatically turn **OFF** after timeout period. Starting 9-02-2006, this timeout is approximately 13.5 hours after it was first turned **ON**. Prior to 9-02-2006, the timeout was approximately 9 hours. In either case you may extend this automatic turn **OFF** time up to 3 additional hours by pressing the “O” button one time for each additional hour any time after the **Key** has been turned **ON**.

The **Status LED** also functions as a battery tester. As long as the **LED** functions, the **KeyCard** has sufficient battery power. Battery power is also monitored by the XyLoc Security Server (XSS). The system will report to the administrator when battery power is low on any KeyCard.

NOTE: To replace a battery, place the KeyCard with the XyLoc logo face down and loosen the screws of the battery door.

Turn the KeyCard with the XyLoc face up, letting the screw and door fall slightly (screws should stay in the door itself). Slide the lid in the direction of the arrow and gently remove the door from the KeyCard.

Replace the CR 3032 coin cell with the “+” up. Slide the door back into place, lining up the screws and fasten them down into place.

Ensure Technologies Technical Support is available to provide any needed assistance. Please contact us at (734) 668-8800 or at support@ensuretech.com.

Revision History:

Revision	Date	Description	Author
1.01	02-07-2005	Revised hardware placement and added part number	GR, RS
1.02	02-22-2005	Removed extraneous blank page	RS
1.03	09-28-2006	Added new badge auto-shutoff timeout time of 13.5 hrs	RS
1.10	02-19-2007	Rearranged topics; Updated text regarding placement, software removal, and battery removal – Added newer pictures in Placement section – Incorporated PC Card settings and instructions	TR
1.11	07-09-2007	Made changes to reflect newer installation of XyLoc Mobile Lock / PC Card	TR
1.12	08-26-2009	Changed to reflect generic version on the installation file. Added newer “Lock Placement” graphics.	RS