

XYLOC®

Ensure Technologies™



Partner Solutions Series

CITRIX®

Ensure Technologies and Citrix Systems in the Healthcare Industry

XyLoc® from Ensure Technologies™ – the leader in active-RF, ‘walk-away’ security solutions for PCs, workstations, and other Windows-based client devices – is a verified Citrix Ready™ solution in use by many healthcare organizations today. When used in a Citrix environment, XyLoc enables new levels of workstation security in thin-client and mixed-client environments while simultaneously improving patient data privacy and staff productivity.



As a member of the Citrix Ready initiative, Ensure Technologies works closely with Citrix to ensure compatibility with Citrix Application Delivery Infrastructure. XyLoc products are verified to work with Citrix XenApp™, Password Manager™, and Hot Desktop as a trusted solution for corporate infrastructure.

Key Solution Benefits

- **Enhanced Security in Multi-User, Mixed-Client Citrix Environments**
- **Simplified Compliance with HIPAA / Patient Data Privacy Laws**
- **Improved Convenience and Productivity for Healthcare Professionals**
- **Seamless Support for Citrix Password Manager, Hot Desktop, and SmoothRoaming™**

XyLoc – Enhancing Computer Security for Healthcare Providers

Computer security and protection of patient data are critical concerns for healthcare providers, with their dynamic multi-user environments and close coexistence of private and public work spaces. While threats from external sources (e.g., hackers) are very real, most data breaches, accidental medical record exposures, and damage to IT assets occur as a result of inappropriate internal access to poorly secured workstations.

Ensure Technologies overcomes internal workstation security challenges with its industry-proven XyLoc product family. XyLoc utilizes patented technology to provide the industry’s only radio frequency-based (RFID), active proximity ‘walk-away’ security products that automatically protect workstations when their users step away from them. No more need for clinical staff to remember to secure the workstation before temporarily walking away from an electronic medical record to respond to another patient. And no more periods of vulnerability as a result of timeout-based security settings. XyLoc takes the burden of computer security compliance off the medical staff and introduces a level of personalization and convenience never before possible.

XyLoc in Action



As the user works, the XyLoc Lock continuously monitors for the presence or absence of her Key's encoded ID, transmitted via RF signal.



As she moves away, XyLoc locks the workstation once the received signal strength drops below a preset threshold.



As she reapproaches the workstation, XyLoc senses her Key's signal and unlocks the workstation, either hands-free or with additional user authentication.

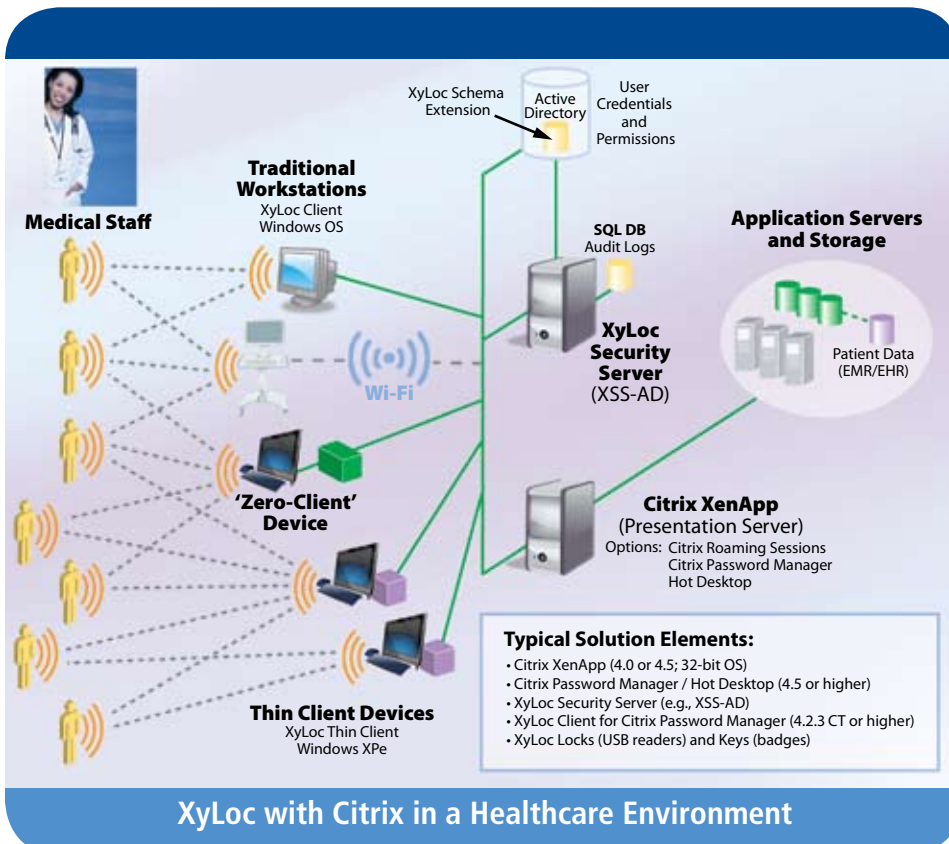


The user is back to work in seconds, rather than minutes for traditional manual log-off/log-on procedures.

With over 200,000 users deployed worldwide today, XyLoc is the only security solution that continues to actively protect the computer – and therefore the healthcare organization’s entire network – after a user has logged on.

XyLoc hardware consists of a radio transceiver ‘Lock’ that plugs into the protected computer via USB port, and a wireless radio transceiver ‘Key’ (badge) worn by the user. XyLoc hardware and software work together to protect user PCs and workstations at a point when they are most vulnerable – after an authorized user logs on, and then steps away from the machine. XyLoc provides full-time access control by assessing a user’s proximity and automatically locking the computer when the user is not physically present.

A XyLoc-protected workstation is aware of the users around it, enabling fast, secure log-on and log-off based on user proximity; walk-up identification and walk-away security; and full-time access control. Unlike password-only or biometric-based systems, XyLoc protection continues after the initial authentication.



XyLoc works with Citrix Password Manager, with or without Hot Desktop enabled:

- XyLoc auto-detects if Hot Desktop is running or not
- Switches automatically to support Hot Desktop if it is enabled
- Runs in standard XyLoc protection mode if Hot Desktop is disabled
- Supports Hot Desktop shared accounts for fast user switching
- Supports user-specific authentication methods
- Supports adjustable grace periods to accommodate brief absences from the workstation
- Synchronizes information with Citrix Password Manager and Hot Desktop

XyLoc with Citrix XenApp, Password Manager and Hot Desktop

Working closely with Citrix, Ensure Technologies has added XyLoc support for the Hot Desktop feature of Citrix Password Manager, enabling fast user switching for shared workstations such as those commonly used by nurses and other medical professionals. And when used with Citrix XenApp, XyLoc provides a strong solution for simplified log-on and disconnect for SmoothRoaming.

Healthcare organizations can now enjoy the full benefits of a Citrix-enabled environment while adding walk-away security, improving staff productivity, and simplifying compliance with patient data privacy laws – with XyLoc from Ensure Technologies.

To learn more about using XyLoc and Citrix together, contact Ensure Technologies today.

XyLoc Security Server (XSS)

The XyLoc Security Server (XSS) is also an important component of this solution, providing centralized management of all XyLoc users and information, event/audit records for HIPAA compliance, and support for enterprise-class directory services and management capabilities of Microsoft Windows 2003 Active Directory®. XSS extends the Active Directory Schema to include classes and attributes used for XyLoc.

et Ensure Technologies™
 135 S. Prospect Rd., Suite 100
 Ypsilanti, Michigan, USA 48198
 Phone: +1-734-547-1600
 Fax: +1-734-547-1601
 Email: info@ensuretech.com
www.ensuretech.com