



Partner Solutions Series

Security with convenience for Epic® users

XyLoc enables healthcare organizations to meet HIPAA and HITECH Act requirements for patient record confidentiality and auditing. During the critical time with the patient, clinicians have more important things to remember than their passwords. XyLoc integrated with EpicCare, provides fast and secure access to patient records, allowing healthcare professionals focus on their jobs rather than computer security. With its patented, active proximity RF technology, XyLoc is the only security solution that continues to provide security after a user has logged on.

"We have chosen to use XyLoc to secure workstations, protecting confidential patient records. By directly integrating XyLoc to EpicCare, we've made it much easier for our clinicians to have fast, secure access to patient records and to secure the records as they walk away. This allows them to provide the best care for our patients without getting slowed down by having to secure the workstations manually."

– Integration Architect at a major healthcare provider

XyLoc Benefits

- Convenient, full-time PC access control
- Simplified Sign on / Sign off
- Fast, easy access for authorized users
- Easy to deploy, control and maintain
- Facilitates compliance with security policies and government regulations

XyLoc Technology

- Supported by EpicCare for fast authentication and log-on without the need for a 3rd party SSO product
- Patented active RFID: walk up recognition / walk away security
- Managed change of control in "kiosk account," shared workstation environments
- Compatible with Citrix® XenApp environments
- Continuous audit log of user activity
- Optional integration with biometrics

XyLoc in Action



As the user works, the XyLoc Lock continuously monitors for the presence or absence of her Key's encoded ID, transmitted via RF signal.



As she moves away, XyLoc locks the workstation once the received signal strength drops below a preset threshold.



As she reapproaches the workstation, XyLoc senses her Key's signal and unlocks the workstation, either hands-free or with additional user authentication.



The user is back to work in seconds, rather than minutes for traditional manual log-off/log-on procedures.

XyLoc consists of a radio transceiver "Lock" that plugs in to the workstation and a discrete wireless radio transmitter "Key" (badge) worn by the user. As the authorized user approaches the workstation, the Lock receives the signal for authentication and the workstation unlocks. As the user steps away the workstation automatically locks, preventing bystanders from viewing or accessing the workstation.

XyLoc Security Server (XSS) is a web server application that centrally manages and monitors XyLoc users and XyLoc-protected workstations throughout the facility. This allows IT managers to easily implement and administer XyLoc across multiple segments of their networks. The "kiosk account" capabilities provide fast, secure access to information in a multi-user, shared workstation environment typical of the healthcare industry – all while keeping a detailed log of who has used which workstation and when.

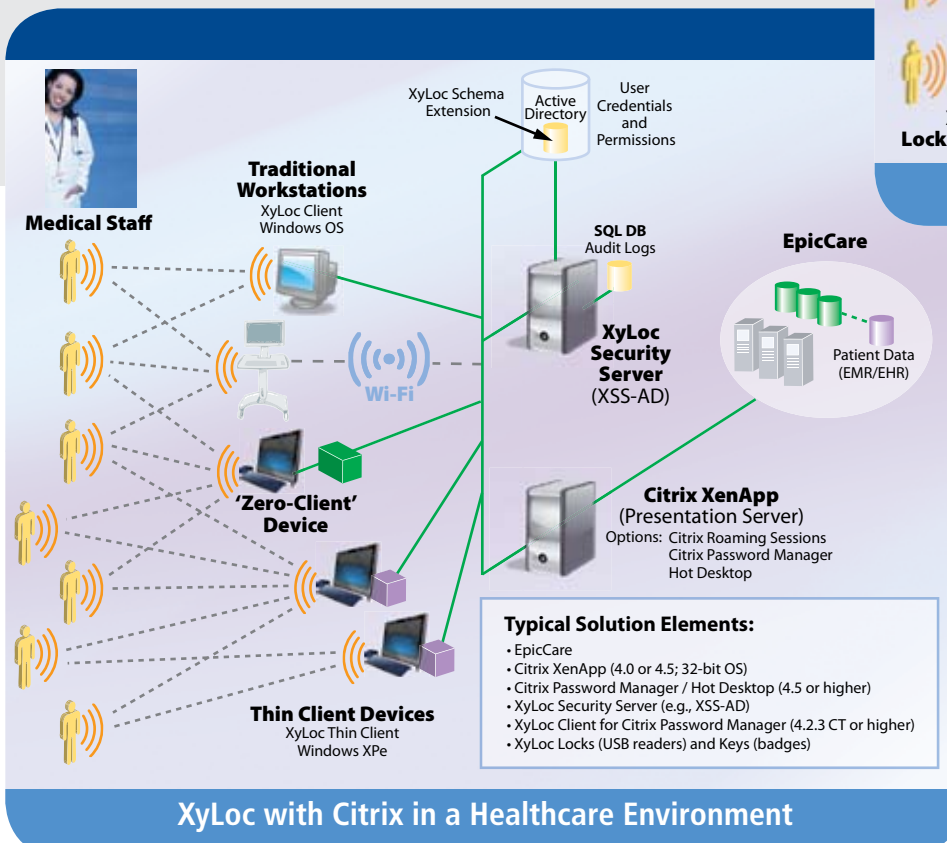
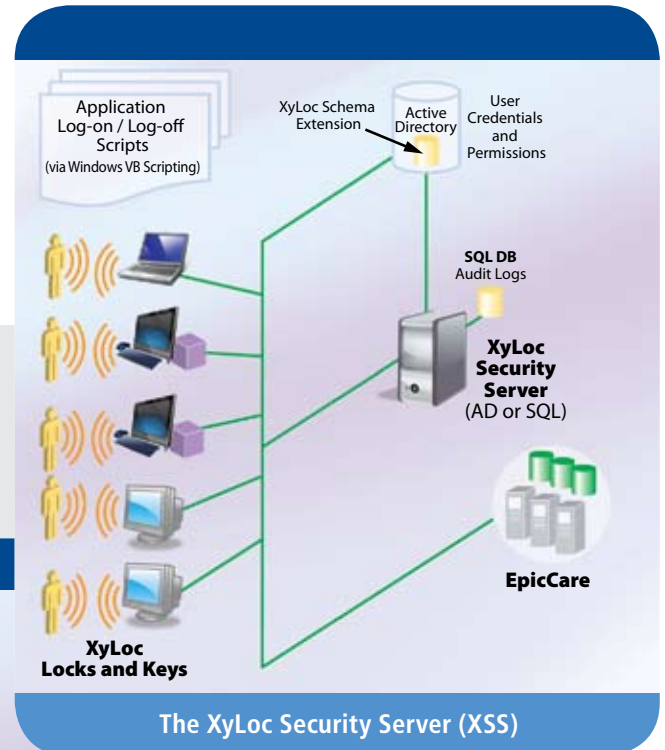
EpicCare Integration delivers simplified sign-on benefits to authorized users. XyLoc authenticates the users' credentials and passes the user's identity to EpicCare for automatic login to their EpicCare account. Furthermore, when the user moves out of range, the EpicCare session is automatically secured or logged off. This allows for extremely fast and secure change of control for shared workstations.



Supported Environments

Microsoft® XP or XPe for Thin Client

Microsoft Active Directory – Windows 2008



135 S. Prospect Rd., Suite 100
Ypsilanti, Michigan, USA 48198

Phone: +1-734-547-1600

Fax: +1-734-547-1601

Email: info@ensuretech.com

www.ensuretech.com